

USB   
UNIVERSAL SERIAL BUS



MP3/WMA-Player

**REDFISH**  
**512 MB**

**USER'S MANUAL**

[www.redfish-products.de](http://www.redfish-products.de) | [support@redfish-products.de](mailto:support@redfish-products.de)

© Redfish by Maxfield GmbH | Carl-Leverkus-Str. 20 | 40764 Langenfeld | Germany

R E D  F I S H <sup>®</sup>

## COPYRIGHT NOTICES

---

This manual is copyrighted. All rights reserved.

This document may not, in whole or part, be copied, reproduced or translated by any means, either mechanically or electronically, without prior consent in writing from Redfish.

The information in this manual has been carefully checked and is believed to be accurate.

However, Redfish assumes no responsibility for any inaccuracies that may be contained in this manual. In no event will Redfish be liable for direct, indirect, special, incidental, or consequential damages resulting from any defect or omission in this manual, even if advised of the possibility of such damages.

Furthermore, Redfish will not be liable for the loss of data caused by damaged products or corrupted memories or drives.

In the interest of continued product development, Redfish reserves the right to make improvements in this manual and the manual and the products it describes at any time, without notice or obligation.

Copyright © 2005

Redfish by Maxfield GmbH | Carl-Leverkus-Str. 20 | 40764 Langenfeld | Germany

# TABLE OF CONTENTS

INTRODUCTION _____	4	ADVANCED SETTINGS _____	14
PRECAUTIONS _____	4	Setting the Menu _____	14
OPERATIONAL NOTES _____	5	1. Equalizer Setting _____	14
PERFORMANCE FEATURES _____	5	2. Repeat Setting _____	14
PLAYER OVERVIEW _____	6	3. Adjusting the LCD Backlight Time _____	14
DESCRIPTION OF BUTTONS _____	6	4. Adjusting the LCD Contrast _____	15
PACKAGE CONTENT _____	7	5. Power Savings _____	15
MISCELLANEOUS IN BRIEF _____	7	6. Record Settings _____	15
- Insert Battery _____	7	7. Language Selection _____	15
- Connect Earphones _____	7	8. Default Settings _____	15
- Connect USB _____	7	DELETING FILES _____	16
GETTING STARTED _____	8	ABOUT THE UNIT _____	17
- Turning on the player _____	8	SYSTEM REQUIREMENTS _____	17
- No files _____	8	PC DRIVER AND UTILITY INSTALLATION _____	18
- Music/Voice/Record _____	8	USB CONNECTION _____	19
- Turning off the player _____	8	TRANSFERRING AND DELETING FILES BY DRAG & DROP _____	19
LCD DISPLAY _____	9	TO UNPLUG THE PLAYER _____	20
MENU STRUCTURE _____	9	TO OPEN SOFTWARE UTILITY _____	20
COPYING FILES TO THE PLAYER _____	10	HOW TO FORMAT THE PLAYER _____	21
PLAYING MUSIC (incl. Lyrics-Display Function) _____	11	HOW TO UNINSTALL DRIVER AND UTILITY _____	21
RECORDING VOICE _____	12	HOW TO UPGRADE THE FIRMWARE _____	21
PLAYING VOICE _____	12	IF THE PLAYER DOES NOT WORK _____	22
ADJUSTING THE VOLUME _____	12	FAQ - FREQUENTLY ASKED QUESTIONS _____	23
HOLD FUNCTION _____	12	PRODUCT SPECIFICATIONS _____	27
NAVIGATION _____	13		

## INTRODUCTION

---

### Dear Customer,

thank you for purchasing this product.

For optimum performance and safety, please read these instructions carefully before connecting, operating or adjusting the device.

Please keep this manual for future reference.

### Navigating the User's Manual

---



This instruction manual is in Adobe Acrobat (.PDF) file format.


We recommend that you use Adobe Acrobat Reader version 4.0 or higher to view and print the User's Manual. Acrobat Reader 4.0 is available on this CD-ROM.

You can easily navigate through this manual PDF by using the provided links:

- Click a page number or topic in the "TABLE OF CONTENTS" (page 3) to jump to a desired topic.
- Click the page number at the bottom right hand of each page to get back to the table of contents.

### Using Acrobat

---

Click the navigation buttons « ◀ ▶ » on the Acrobat toolbar to go to the first page, previous page, next page, or last page of the User's Manual. Click the print button  on the Acrobat toolbar to print the User's Manual.

## PRECAUTIONS

---

- Keep the product and all its parts and accessories out of the reach of small children.
- Do not use or store the player in dusty or dirty environments as this may damage the components.
- This product is not waterproof or water resistant. Keep the player away from water.
- Keep the player away from heat, humidity, and magnetic interferences.
- Do not try to alter or remodel the product as all warranties will otherwise be void.
- Normal vibration will not affect the operation of this product. However, dropping or excessive shock may cause damage to the product.
- Do not leave the unit exposed to direct sunlight for long periods of time, and do not leave it close to a heat source.
- Do not clean the player with abrasive chemicals that may harm the surface (such as thinners, benzene or alcohol).

### Precautions for listening with Earphones

---

- It is not recommended that you use the earphones at a high volume for an extended time as this may cause hearing damage.
- If you experience ringing in your ears, reduce volume or discontinue use.
- Do not use while operating a motorized vehicle as it may create a traffic hazard and is illegal in many countries.
- Use extreme caution or temporarily discontinue use while encountering potentially hazardous situations.
- Do not turn the volume up to a level where you can't hear what's around you.
- Discontinue use if you experience discomfort with the headphones or earphones.

## OPERATIONAL NOTES

---

- If the unite will not be operated for a prolonged period, remove the batteries to avoid possible damage caused by electrical leakage.
- The MP3 player should be kept away from extreme temperature changes, moisture and dust.
- You have to load WMA or MP3 music to the player before listening.
- Set the HOLD switch to the release position before operating.
- Do not drop the player as this may damage the surface or cause the batteries to fall out.

### Battery Status

---

Battery life (Alkaline battery, size AAA x 1): about 8 hours

- Battery life may vary, depending on operating conditions, make of battery and date of manufacture.
- If the player's buttons do not respond, take out the battery and reinstall. If the player still does not work, change the battery.



#### Please note:

---

- To minimize static electricity, avoid operating the player in an extremely dry environment.
- If the player fails to work under proper operating conditions, reset it by removing and reinstalling the battery.

## PERFORMANCE FEATURES

---

### MP3 and WMA playback

---

- Supports digital music formats MP3 and WMA

### Built-in A type USB connector

---

- Direct connection to computer without any cable

### USB mass storage device

---

- No driver installation required

### Supports directories

---

- Playback of MP3/WMA music even in sub-directories

### Upgradeable!

---

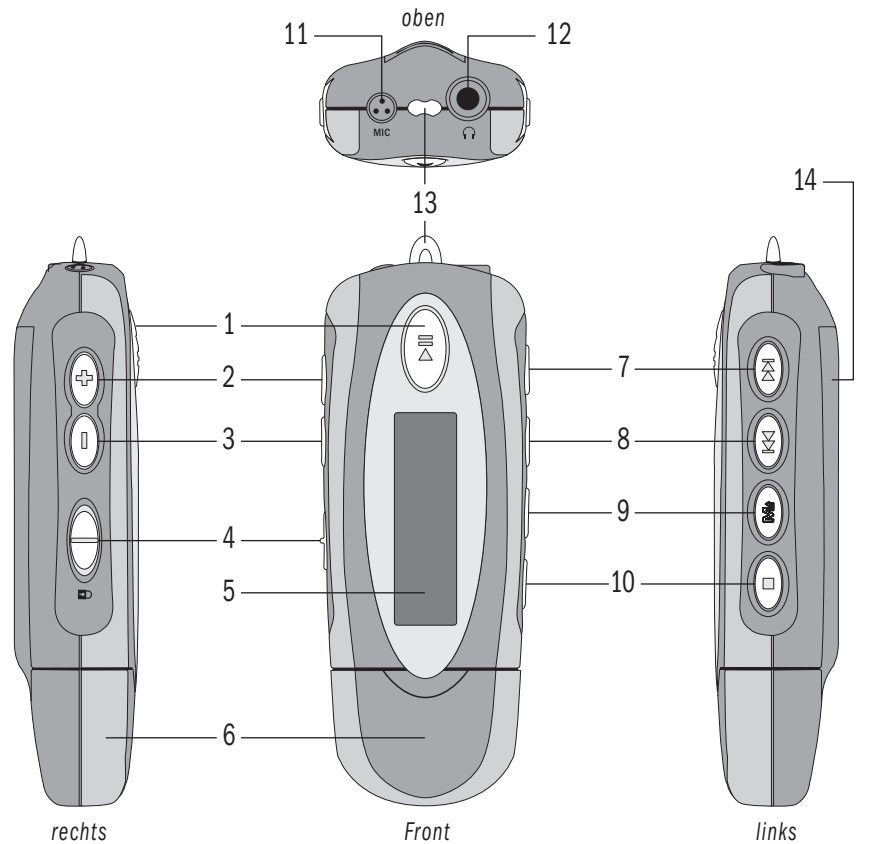
- You can upgrade the built-in programs (firmware) if necessary.  
This manual refers to firmware status ver. 3.290.  
The player operation may vary with later firmware versions.

### System support

---

- Supports operating systems Windows Me/2000/XP.  
**Note for Windows Me/2000/XP users:** Installation of the MP3 player software is required only if you wish to upgrade the firmware of the player.  
**Note for Windows 2000 users:** Windows Service Pack 3 must be installed before installing MP3 player software.
- Supports Windows 98/98SE after installation of drivers.
- Supports Mac OS X (version 10.2.6 or above) without driver installation.

## PLAYER OVERVIEW



- 1 Power ON | Play | Pause
- 2 Volume +
- 3 Volume -
- 4 Hold (key lock)
- 5 LCD-display

- 6 USB-port cover
- 7 Next track/directory
- 8 Previous track/directory
- 9 Menu (Mode)
- 10 Power OFF | Stop

- 11 Microphone
- 12 Earphone socket
- 13 Loop for carrying strap
- 14 Battery cover

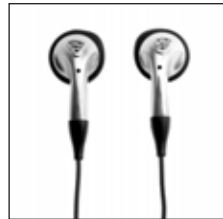
## DESCRIPTION OF BUTTONS

Button/switch	Function	Function in menu
<b>Power ON</b> <b>Play</b> <b>Pause</b>	Press to turn the player on. Press to play a song. Press to pause the playback.	
<b>Power OFF</b> <b>Stop</b>	Press and hold the button until the shut down bar has finished to turn off the player. Press to stop the playback.	
<b>Menu button</b>	Press to enter the menu. Press to stop voice recording.	Press to confirm your selection or to enter the current menu. Press and hold the button to exit the menu. Press to select the record rate in the record setting submenu.
<b>Next track/folder</b>	Press to skip to the next track or folder.	Press to select a setting or press to select a menu in the list.
<b>Previous track/folder</b>	Press to skip to the previous track or folder.	In navigation menu: Press to skip to the next/previous directory.
<b>Volume +/-</b>	Press to increase/decrease the earphone volume level.	
<b>Hold switch</b>	Slide the Hold switch to hold position: All buttons are locked. Slide the Hold switch back: Cancel the locked status.	

## PACKAGE CONTENT



Redfish MP3/WMA-Player 512 MB



Stereo-Earphones



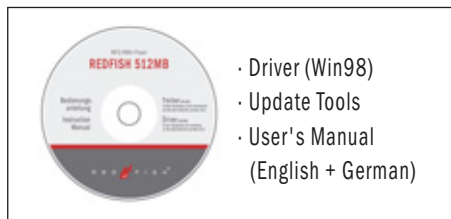
1 AAA-Battery



Carrying Strap



USB-Cable



CD-ROM

- Driver (Win98)
- Update Tools
- User's Manual (English + German)



Quick Start Guide



Guarantee Card

## MISCELLANEOUS IN BRIEF

### Insert Battery

- Slide open the battery compartment cover in the back of the player.
- Insert the supplied battery. Make sure the battery is inserted properly by matching the + and - on the battery with the symbols on the player.
- Replace the battery compartment cover.



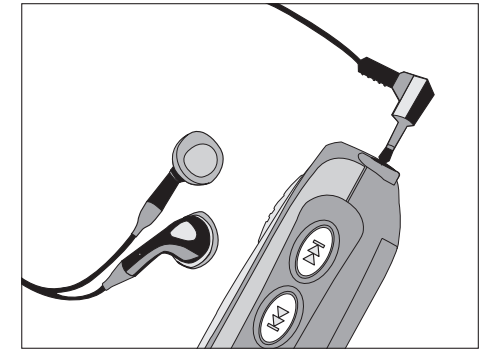
Do not put batteries in domestic waste. Please take care of proper disposal.

## MISCELLANEOUS IN BRIEF - continued

### Connect Earphones

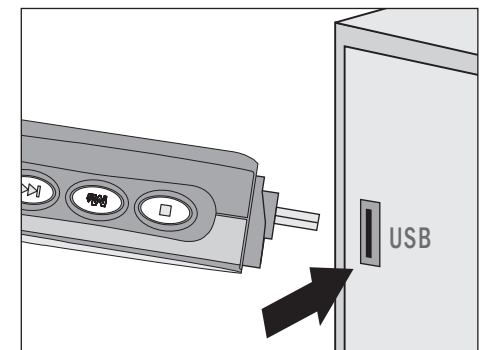
- Firmly plug the earphones into the appropriate socket on the rear part of the player.

**⚠ CAUTION!** - Disconnect the earphones from the player before connecting USB.



### Connect USB (see detailed description on pages 18/19)

- Position the PC in a way that its USB ports can be easily accessed.
- Remove the cap of the player. You will find an A type USB plug.
- Plug it into the USB port of the computer. The player turns on once it is connected.
- The PC system detects "New hardware" and starts to install the drivers automatically.
- Wait for the system to finish the installation.
- Then, double-click on "My Computer" on the desktop.
- A new Removable Disk will appear in the "My Computer" window. It is the player's built-in memory. Now you can download your WMA/MP3 music to the player by copying the files to the new Removable Disk.



## GETTING STARTED

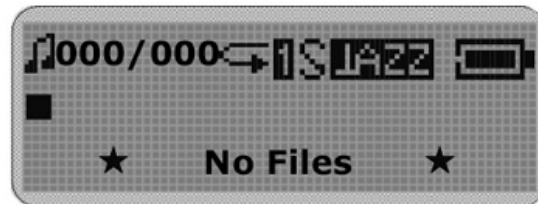
Insert one AAA size battery into the battery compartment (see page 7).

### Turning on the Player

Press the PLAY/PAUSE button to turn on the player.

### No Files

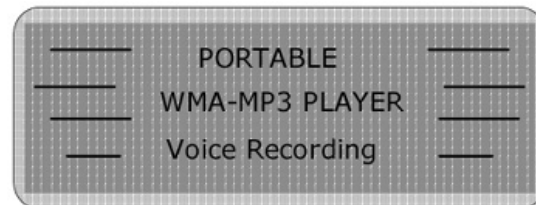
If there are no WMA/MP3 files found in the player, the LCD displays "No Files" when you want to listen to music.



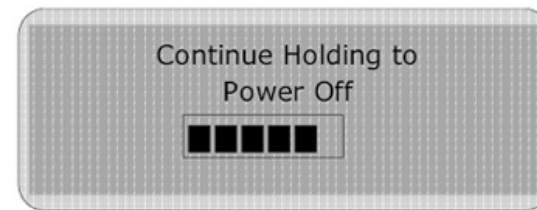
### Music/Voice/Record

If you like, you can switch to playback music / voice memos or start to record voice.

Just press the MENU button and the SKIP button to select "Music", "Voice" or "Record" in the menu list.



### Turning off the Player



Press and hold the STOP button for a few seconds until the Shut Down Bar has finished.

To turn off the player, you have to press the STOP button until the turn-off process is completed.

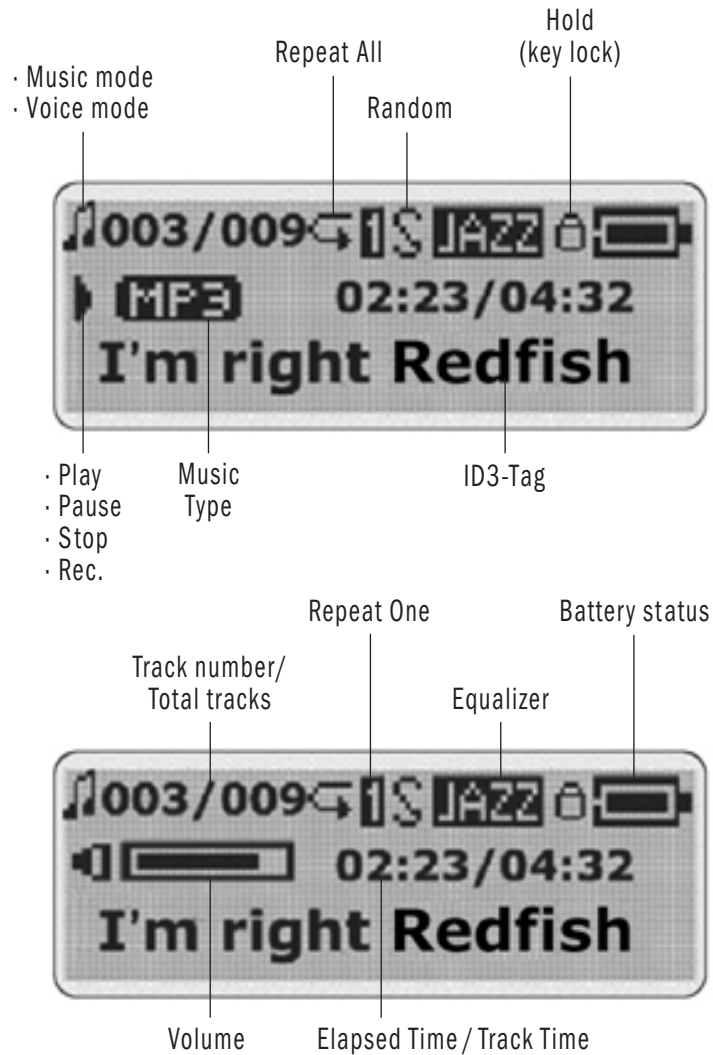
Otherwise the player returns to the previous status.

#### Remark:

- Set the HOLD switch to the release position before operation.
- During STOP status, the player will automatically turn off its power after the set time, in case no button is pressed.



## LCD-DISPLAY



## MENU STRUCTURE

MENU STRUCTURE		
Music	Music Playback	
Record	Record Voice	
Voice	Voice Playback	
Navigation	Directory Level	Song Level
Settings	Equalizer	Normal   X-BASS   Rock   Jazz   Classic   Pop
	Repeat	Normal   Repeat One   Repeat All   Random   Random All
	Contrast	+   -
	Back Light	Off   3sec.   5sec.   10sec.   15sec.   Always On
	Power Savings	Off   1min   2min   5min   10min   15min
	Record	Source   Encoder   Rate
	Default	
	Language	
	Exit	
Delete	Music Delete	Yes   No
	Voice Delete	Yes   No
About	Player Information	
Exit		

Please use the MENU key, respectively the SKIP keys to attain the desired menu.

# COPYING FILES TO THE PLAYER

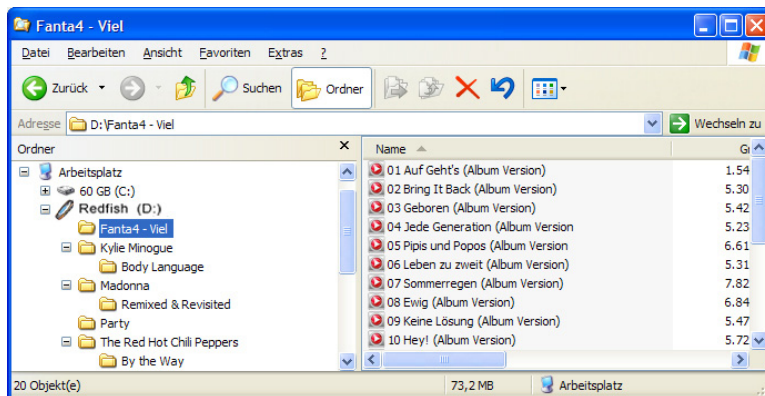
There are two ways to transfer music tracks/files to the REDFISH 512MB MP3/WMA-Player.

## 1. Copying files with the Windows Explorer

- After the player is connected to the PC via USB cable, it will be displayed as "Removable Disk" under "My Computer".



- Select the file(s) you would like to load from the PC to the player and click "Copy". Right-click on the Removable Disk and choose "Paste". The file transfer will start.



- To copy the files from the player to the computer do the same vice versa.

## 2. Copying files with the Windows Media Player

- Connect the player to the PC and start the Windows Media Player 9.
- Click on the "Media library" to manage your songs.
- If you want to add more music go to "File" and select "Add to Music Library" from the menu bar.
- It is recommended that you edit the song information such as artist and album before copying your songs to the player.
- Right-click the songs that you wish to copy to the player. Select "Copy to CD or Device". Windows Media Player will then add the songs onto the "Playlist to Copy".
- You may go back to "Music Library" if you wish to add more songs to the playlist.
- Click "Copy to CD or Device" on the left panel.
- Select the player's drive from the "Objects on device" drop-down menu on the right side of the window.
- Click the "Copy" button on the right of the windows to copy the songs onto your player.



### What causes the sequence of music tracks being played

The audio tracks in a folder are played in alphabetical order. To maintain the alphabetical order, whole music albums should be copied as a folder, not as single tracks. – To create a desired sequence, precede each file name before copying with, for example, track numbers "01" - "99" or "1 01", "1 02" ... "3 01". Then the audio tracks will be played in numerical order.

## PLAYING MUSIC

### Select a song

After you turn on the player, press the SKIP button to select one song to listen to.



### Play MP3/WMA music

Press the PLAY button to start playback.



### Pause playback

To pause the playback, press the PLAY button during playback.

To continue the playback, press the PLAY button again.



### Fast-Forward or Rewind within a song

Press and hold the SKIP button to forward or rewind in the current playback song.



### File-name display

When you select a song, the file-name will be displayed on the LCD.

The file name will scroll from left to right if the file name is longer than the display.

### ID3 Tag display

- If the music contains an ID3 tag displaying the music title and artist name, these will be displayed on the LCD. The player supports English and European fonts.
- If the title and artist information is longer than the display, the ID3 tag will scroll from left to right.

### Lyrics display

The player supports lyrics files in LRC format.

1. Prepare an MP3 or WMA music file, for example: happymusic.mp3.
2. Download a lyrics file from the internet. The lyrics file must have the extension "LRC". For example: happymusic-2004.lrc.
3. Rename the lyrics file. For example: happymusic.lrc. Make sure that the lyrics file name is the same as the corresponding music file name.
4. Copy the lyrics file and the music file to the player.
5. Disconnect the player from the PC.
6. Use the SKIP buttons to select the music file, for example: abc.mp3. Press the PLAY button to play.
7. The LRC icon appears, and the lyrics will be displayed synchronously on the LCD while the music is being played.

### Remarks:



- The player supports LRC format only.
- In case the lyrics do not synchronize with the music, please download a better lyrics file from the internet and try again.
- Make sure the MP3 music file and the LRC file are located in the same directory and the filename is the same. If not, the player can not recognize the lyrics file.

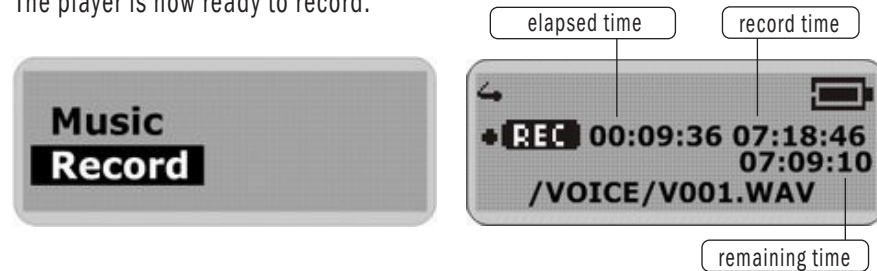
## RECORDING VOICE

### Start recording

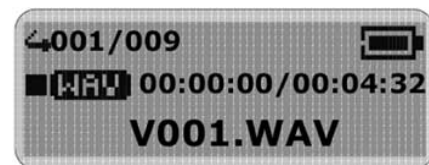
You can activate this function from the menu.

In the menu list, select "Record" and enter.

The player is now ready to record.



### Stop recording



Press the STOP or MENU button to stop the recording and go to voice mode.

The voice memo will be saved as a file named "VXXX.WAV" in the Voice folder.



#### Note:

The LCD displays "Memory Full" when there is insufficient memory space for further recording. The recording will stop at this point. If this happens, either erase or copy some files to your PC, and then restart the recording.

## PLAYING VOICE



This operation is almost identical to Playing Music.

Select "Voice" in the menu which opens Voice mode.

You can select a memo to listen to by pressing the SKIP button. Press the PLAY button to play the voice memo.

## ADJUSTING THE VOLUME



Press the +/- buttons on the player to adjust the volume.



Note: Press the button briefly to adjust volume level by level. Press and hold the button to adjust continuously.

## HOLD-FUNCTION

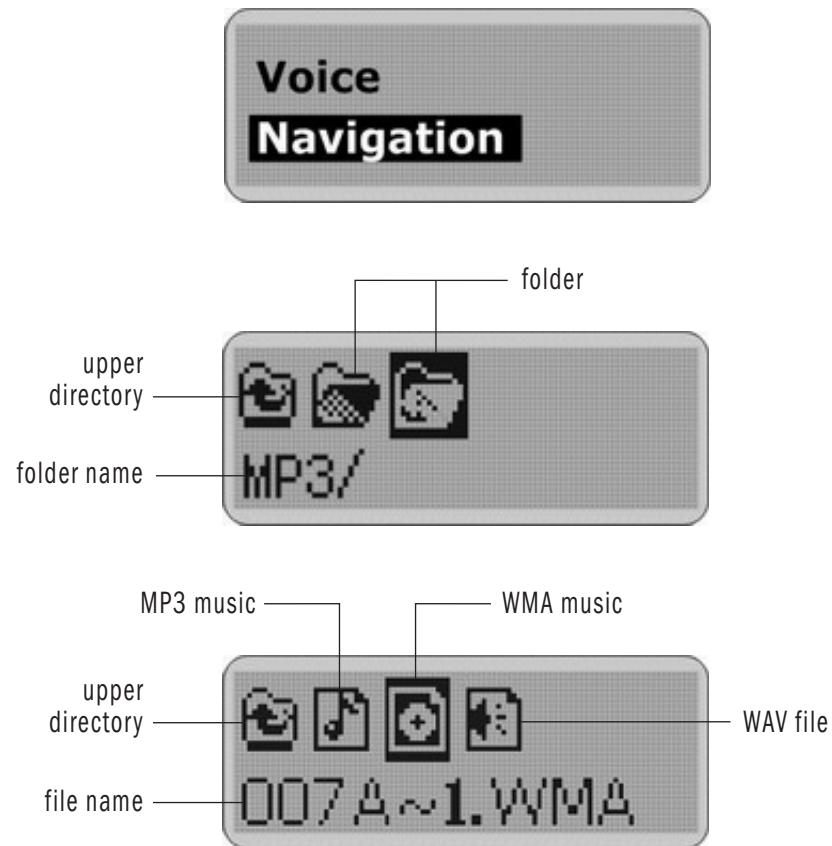


Slide the HOLD switch in the direction of the arrow. When the HOLD switch is on, the buttons are locked and will not function. Slide the HOLD switch back to cancel the HOLD mode.

## NAVIGATION

Press the MENU button to enter the menu.

1. Select "Navigation" and press the menu button to enter the navigation mode.



2. Use the SKIP button to select a file or folder.  
Use the PLAY button to play the music or enter the folder.
3. Use the STOP button in Navigation mode to backward to the upper level.

**Note:** 

- When a folder is selected in navigation mode, press the MENU button.
- A sub-menu window will pop up.
- To enter the folder, select ENTER.
- To play music located in the folder, select PLAY.
- When a file is selected in navigation mode, press the MENU button.
- A sub-menu window will pop-up.
- To play this file, select PLAY.
- To erase, select DELETE.

# ADVANCED SETTINGS

## SETTING THE MENU



Press the MENU button to enter the menu list.  
Press the SKIP button and select "Settings".  
Press the MENU button to enter "Settings".

There are several advanced setting options.

### 1. Equalizer setting



Select "Equalizer" in the Settings list and enter.  
The Equalizer (EQ) setting adjusts the music playback effect.



There are 6 kinds of EQ options preset in the player: "Normal", "XBass", "Rock", "Jazz", "Classical" and "Pop".

Press the SKIP button to select an EQ.  
The selected equalizer is then activated.

Press the MENU button to confirm and exit the menu.

### 2. Repeat setting



In the Settings list, select "Repeat" and enter.



The available playmodes are:  
"Normal", "Repeat One", "Repeat All", "Random" and "Random All".

Press the SKIP button to select a playmode.

### 3. Adjusting the LCD Backlight Time



Select "Backlight Time" and press MENU to apply.



#### 4. Adjusting the LCD Contrast

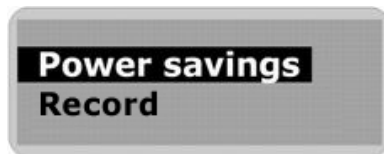


In the Settings list, select "Contrast" and enter.



Press the SKIP button to adjust the contrast level.

#### 5. Power Savings



Use the Power Saving function to automatically turn the MP3 Player off after a predetermined length of inactivity.



In the Settings list, select "Power Savings" and enter.

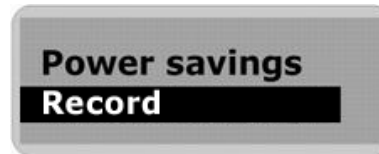
Press the SKIP button to select the period of time before the player automatically turns off.



Note:


Selecting "Off" would never turn off the player automatically.

#### 6. Record Settings



In the Settings list, select "Record" and enter. Each time the MENU button is pressed, the Recording Sampling Frequency will change.



Note:  A higher recording sampling frequency brings better recording quantity, but requires more memory space.

Sampling-Frequency	Max. Recording time per 512MB
8000 Hz	32,0 hours
11025 Hz	23,2 hours
16000 Hz	16,0 hours
22050 Hz	11,6 hours
32000 Hz	8,0 hours

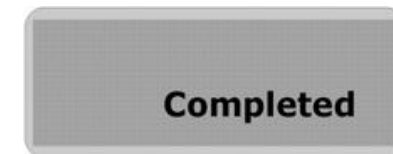
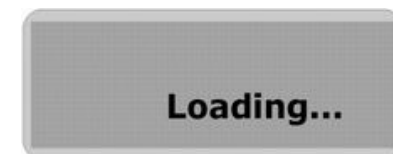
#### 7. Language selection

Under "Language" you have the choice of 9 languages to be used for the user interface.

#### 8. Default settings



To load all default settings of the player, select "Default" and confirm with the MENU button.



## DELETING FILES

**Step 1** Stop any playback or recording functions before you start to delete files.

**Step 2** Press the MENU button to enter the menu.  
Select "Delete" and enter.  
Two options will be displayed on the screen.



**Step 3** To delete music files, select "Music" and enter.  
To delete voice memos, select "Voice" and enter.



**Step 4** You will be prompted to verify that you want to delete the listed music file or voice memo.

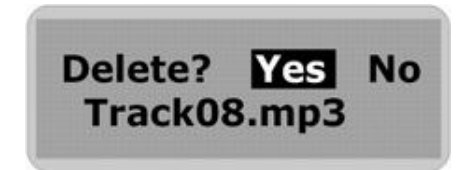


The file name is listed on the screen to help you decide.

The selected answer is "No" by default.

If you do not want to delete the file, press the MENU button. The next file will be listed on the screen and you will be asked again if you want to delete it.

**Step 5** If you are sure you want to delete the listed file, press the SKIP button to select "Yes".  
Then press the MENU button to confirm.



**Step 6** The file is now deleted.  
The next file will be listed on the screen and you will be asked again if you want to delete this file.



**Step 7** When you have finished erasing the file, the player will automatically exit to "Delete" screen.

**Step 8** Select "Exit" and enter to exit to the menu list.



### Warning!

You cannot recover a file once it has been deleted.



## ABOUT THE UNIT

---

Information is available regarding the firmware version, built-in memory size and free memory size.



Select "**About**" in the menu list and enter.



Information about

- the firmware,
- the built-in memory capacity and
- the free memory

will be displayed.



Press any key to exit the menu list screen.



### Note:

During normal operation, the player may shut down in certain situations e.g. abnormal electrostatic interference or incorrect operation.

If this happens, remove the battery and insert it again after waiting a few seconds.

## SYSTEM REQUIREMENTS

---

- Pentium 133 MHz or higher
- Windows 98/ME/2000/XP  
Mac OS X (support ver. 10.2.6 and above)
- 20 MB of available hard drive space
- CD-ROM drive (double speed or faster)
- USB port supported

### No driver is required for:

---

- Windows ME, Windows XP, Windows 2000 and Mac OS X

These Windows operating systems have built-in drivers to support USB drive mode.

Simply insert the player into the USB port in either desktop PC or notebook computer.

A new drive icon will appear in the "My Computer" window.

### Driver is required for:

---

- Windows 98/98 SE

## PC DRIVER AND UTILITY INSTALLATION

Make sure that you first start the software setup on the bundled CD-ROM before you connect your player with the USB port!

Connecting before setting up the driver device will prompt the message "Add New Hardware Wizard" for Windows 98/98SE.

The player driver and utility cannot complete the setup using the "Add New Hardware Wizard" !

1. Insert the bundled CD-ROM into the CD-ROM drive and after a few seconds a dialogue will pop up on the computer screen.
2. Click on the [User's Manual] button on the right hand side of the screen.

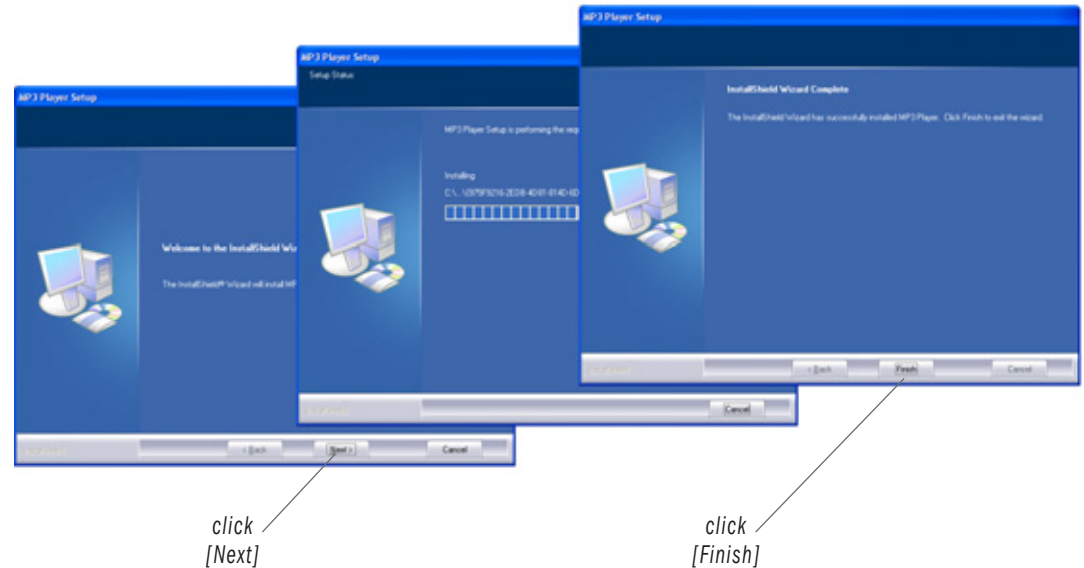
The manual screen will pop up. If it is the first time to use the player, please read the manual carefully.

3. Click [Driver Setup] to install the driver.
4. In the "Welcome to the Install Shield Wizard" for Windows, click [Next].
5. Click [Next] in the series of windows that appear.

Sometimes a pop-up window displaying the "Windows Logo Test" appears. This software will not impair or destabilize the normal operation of your system.

Click [Continue Anyway].

6. After completing the installation, please click check box [Yes, I want to restart my computer now] and then click [Finish] to restart your computer (Windows98).



### Note:

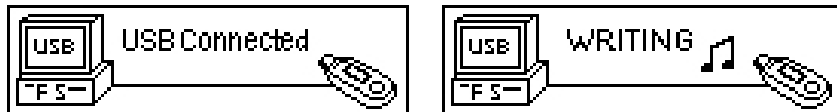
The bundled CD-ROM will automatically run and allow you to view the manual and to install the driver.

If this does not work then run the file "showmenu.exe" manually. This file is located in the root directory of the bundled CD-ROM.

## USB-CONNECTION

You can transmit files through the USB port of your PC.

1. Make sure your PC supports USB devices and that you have installed the driver (Windows98/98SE).
2. Turn your player off if it is on.
3. Remove the USB port cap of your player.
4. Connect your PC with the player either directly or by using the USB extension cable supplied.
5. The LCD will display "USB Connected". This indicates that the player is in USB mode.



6. The PC will automatically find the device when the player is connected to the PC for the first time and will set up the USB driver for the player.
7. When the USB driver has finished, "Generic MP3 Player USB Device" will appear in [System Properties] > [Device Manager].
8. A removable disk icon is displayed within the "My Computer" window.



### Note:

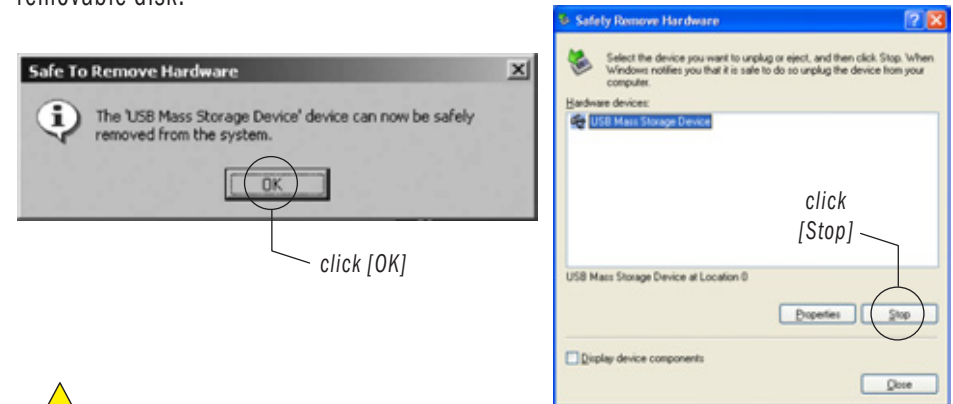
How to check the USB driver

Windows98/ME: Control Panel > System > Device Manager

## TRANSFERRING AND DELETING FILES BY DRAG & DROP

The removable disk icon displayed in the "My Computer" window indicates the memory capacity of the player.

You can now save, copy and delete files on the player by using Drag & Drop in the removable disk.



### Caution!

- Do not disconnect the player while a file is being downloaded. It would corrupt the firmware of the player.
- If the player does not work for any reason, remove the battery and reinsert it three seconds later.
- The player may be damaged if you disconnect it during file transmission!
- Do not disconnect the player if the LCD displays READING or WRITING as it may cause serious damage to your data and to the player!

## TO UNPLUG THE PLAYER

### Windows 98 / 98SE

While the USB port is busy, the LCD will display READING and/or WRITING.  
When the transfer has finished, the LCD will display USB Connected and you can then safely disconnect the player.

### Windows XP

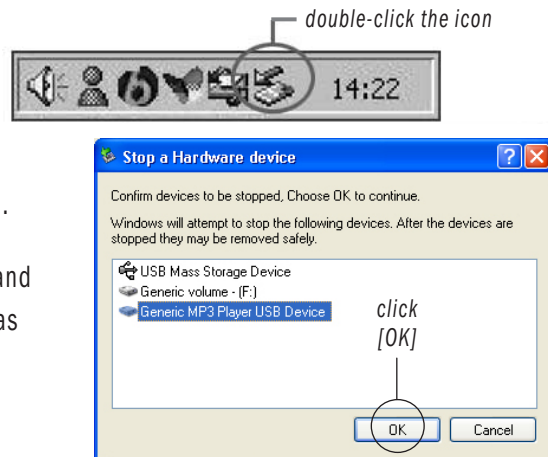
- Click on the "Safely Remove Hardware" icon in the taskbar (next to the clock).
- Click on "Safely remove USB Mass Storage Device".
- Wait until a "Safe to Remove Hardware" message is displayed.
- Remove the MP3 player.

### Windows ME / 2000

While the USB port is busy, the LCD will display READING or WRITING.

When the transfer has finished, the LCD will display USB Connected.

By using the "Safe Removal" icon and following the pictorial instructions as shown on the right to stop the USB Mass Storage Device, you can then safely disconnect the player.

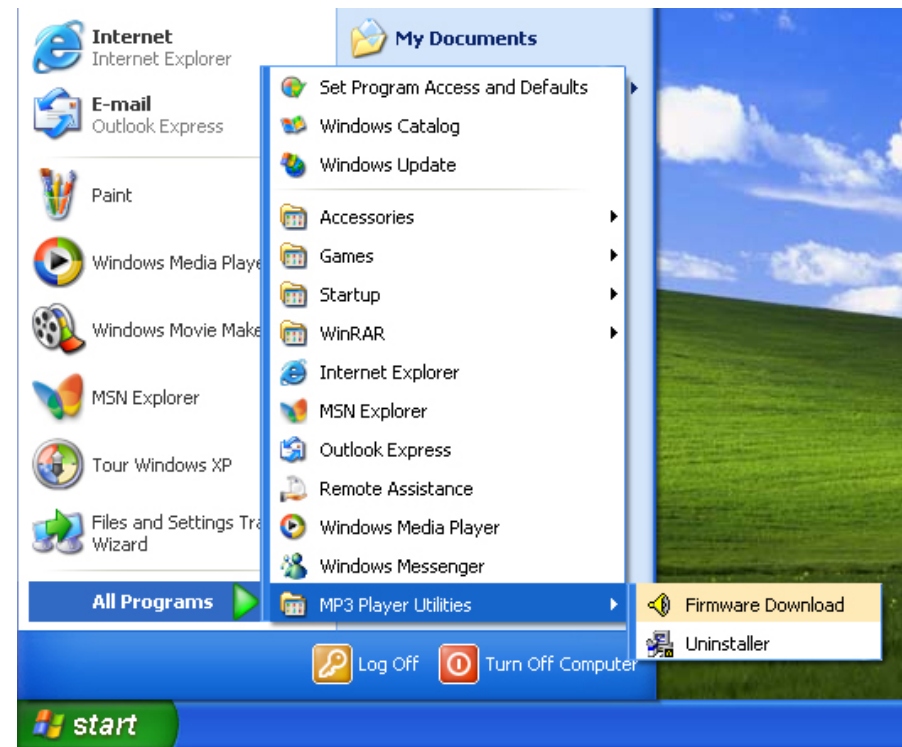


## TO OPEN THE SOFTWARE UTILITY

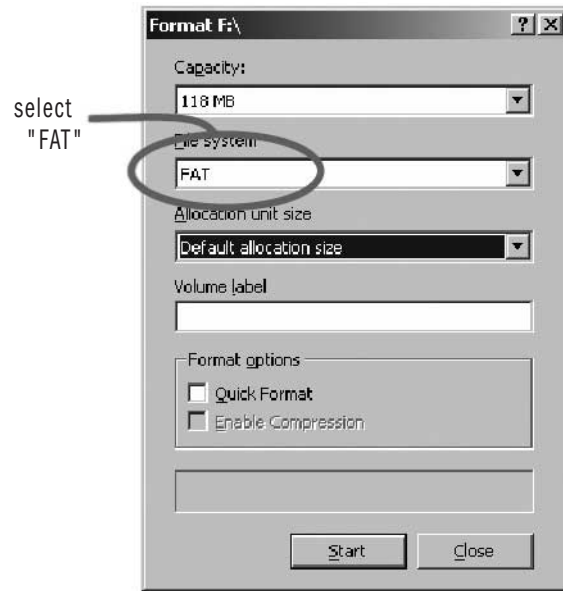
When the driver installation has been completed, the software utility will be installed on your PC.  
You can then use the utility to upgrade the unit.

### Start > Program > MP3 Player Utilities

Connect the player to your computer and click the corresponding program to begin running the software:



## HOW TO FORMAT THE PLAYER



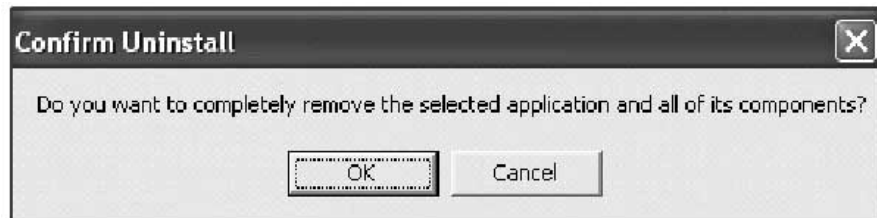
You can format your player using the Windows Format tool.

Please use the setting "FAT", not "NTSF". Otherwise the player would not be able to function!

## HOW TO UNINSTALL THE DRIVER AND UTILITY

Click:

Start > Program > MP3 Player Utilities > Uninstall > OK



## HOW TO UPGRADE THE FIRMWARE

The firmware in the player can be upgraded by using the Player Update utility running on your PC. Upgrade the firmware by running the MP3 Player Update (Firmware Download) utility as follows:

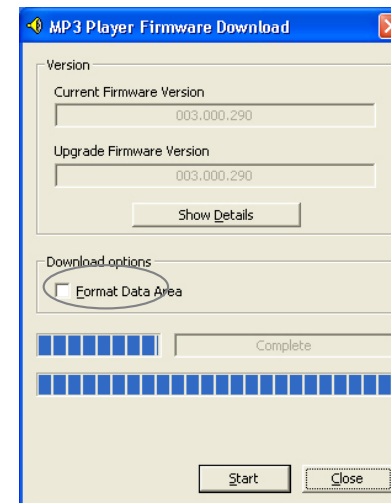
Start > Program > MP3 Player Utilities > Firmware Download

Check the current firmware version and the upgrade firmware version. If you are sure it is the correct version, click on the START button. The firmware will be upgraded on the player. Once it has finished upgrading, click the CLOSE button to exit.



### Note:

If the utility can not find the player even after searching for several minutes, please cancel the searching, and redo the steps mentioned above. If not successful, try to put the player into Recovery mode.



### The Option "Format Data Area"

Not Selected (default):

- Upgrades the firmware only, recommended.

Selected:

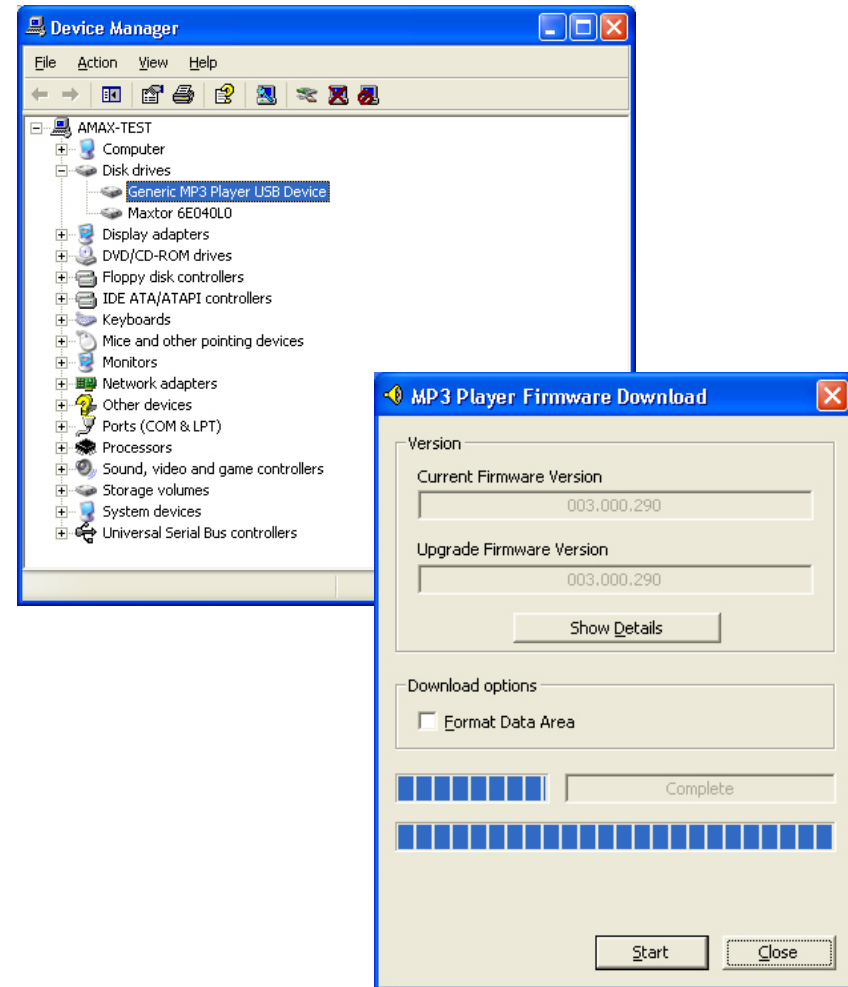
- Upgrades the firmware and formats the storage. When this has finished, please re-format the Removable Disk using the Windows Format tool.

## IF THE PLAYER DOES NOT WORK ...

If the player does not work for any reason, remove the battery and reinsert it three seconds later, or replace it with a new battery.

Occasionally, the player will not work because the firmware has been accidentally corrupted. To solve this problem, please refresh the firmware:

1. Disconnect the player if it is already connected.
2. Turn the player off, if it is on. If the player will not turn off, please remove the battery (for models using an AAA battery).
3. Press and keep pressing the PLAY button.
4. Connect the player with your PC. Wait for approximately five seconds, then release the PLAY button.
5. The computer will now search for a new device. Wait for it to finish.
6. When the player has finished Recovery Mode it will be ready for updating/refreshing the firmware.
7. Run the Player Update (or Firmware Download):  
Start > Program > MP3 Player Utilities
8. The Player Update (Firmware Download) window will appear.  
Click START to refresh the firmware.
9. When this has finished, the Firmware Refresh is completed.



## FREQUENTLY ASKED QUESTIONS

### 1. Why do I fail installing the installation software on my operating system?

- Please note that there is no driver required for PC running Windows XP, 2000 and ME (Plug and Play). USB devices will be automatically detected by the system.
- Windows 2000 users should update to Windows 2000 ServicePack3 (SP3) or higher before driver installation can continue.
- Using Windows98, you need to install a driver every time before connecting a USB device. In case installation failed, please remove the driver by taking the following way: Start > Program > MP3 Player Utilities > Deinstall.

After deinstalling the driver, please disconnect the player from your PC, and then restart the computer. Re-install the driver via setup. Now, in the explorer the removable drive should be available for data transfer.

Note: Please use the respective latest driver version, available on our website [www.redfish-products.de](http://www.redfish-products.de).

- Please note that Windows95 and Windows NT are unable to support USB interfaces properly. Upgrade your system to Windows 98 (Version 2.0, 4.10.2222 A), 2000 (Service Pack 3), ME or XP.

### 2. What should I do if I encounter a data transfer failure to the player-memory?

- Be sure the power is sufficient for writing mode.
- Please check the capacity of the battery.
- Ensure your operating system has recognized the player as a Removable Drive.
- Ensure your PC meets the minimum system requirements for operating the player.
- Check the connection between the player and the PC.
- Re-format the internal memory with the player's utility and download again.

### 3. Why does the player's utility window sometimes fail to pop up on the PC screen?

- The player's utility only works when it is connected to the PC and when the player is on.

- The correct connecting procedure is: turn on the player and plug the ends of the USB cable to the player respectively to the PC.
- It is not recommended to connect both the player and the PC first and then turn on the power to the player as this will fail to start up the player's utility window.

### 4. What are the VBR or CBR supported by the player?

- The player is capable of supporting the content encoded with VBR (Variable Bit Rate) from 32, and up to 320 Kbps per MP3 track, or CBR (Constant Bit Rate) 48Kbps.
- It reads MP3 tracks that are sampled at 32 kHz, 44.1 kHz or 48 kHz.
- The playback possibility of 32, 40, 48, 56, 64, 80, 96, 112, 128, 160, 192, 224, 256 and 320 Kbps is allowed per MP3 track.

### 5. Why is there distortion during playback?

- This may be caused by low battery or temporary outside interference.
- Alternatively, the content may be badly encoded.

### 6. Why is the playback quality bad?

- Download again if the playback is fine on the PC. If the problem persists, please re-format the memory with the player's utility to clear the memory and then try to download again.
- Alternatively, it may be caused by bad encoding or result from a poor-quality source. Please close any temporary programs before encoding in order to achieve a high quality result.

### 7. Why are the player buttons not functioning?

- Please check if the Hold switch slides to ON or OFF.
- If the Hold switch is ON, all buttons are locked which prevents accidental operation (similar to mobile phones, for example).

### 8. Why do I not hear anything when the PLAY button is pressed?

- Please check if the HOLD switch is on or off. It should be off.
- Check whether files have been stored in the built-in flash memory. Press the PLAY button to try again.
- Check the earphone connection. If necessary, replace with another one.
- Check the volume level and see if it has been set too low.
- The file format may be incorrect. Only MP3 and WMA files can be played. Audio CD tracks have to be converted into MP3 format first before being copied to the player. Use converting software like "CDex", for example.

### 9. Why does my player not continue playback after a certain music track?

- The following file might be damaged or (c)-protected as a WMA-DRM file. Erase this file from the player.

### 10. Why does my player not work any more after a few days?

- Maybe the battery is empty. Please replace it with a new one.

### 11. How can I recover the player when firmware upgrading failed?

1. Start the provided utility software "Firmware Download" on your PC.
2. Take the battery out of the player.
3. Keep the Play button pressed, while you connect the player to your computer. While still pressing the Play button, please wait for about 60 seconds, until the utility software will detect the player again.
4. When the player is being detected, please start the firmware update. Then, the player should be able to work again.

### 12. Why is there no display though the music track is being played?

- There are no required MP3 ID data available for the respective music track. You can supplement those by using, for example, the freeware program WinAMP. If you intend to do so, please refer to the respective software instructions.

### 13. Why does the display show LOCKED for a short time and turn the player off after I switched the player on?

- The keys are locked. Slide the Hold switch into OFF position. When you turn the player on again, it will work.

### 14. What causes the sequence of music tracks being played?

- The audio tracks in a folder are played in alphabetical order. To maintain the alphabetical order, whole music albums should be copied as a folder, not as single tracks.
- To create a desired sequence, precede each file name before copying with, for example, track numbers "01" - "99" or "1 01", "1 02" ... "3 01". The audio tracks will be played in numerical order, then.
- Subsequently, you can change the track order by using a tool like, for example, the freeware program ReOrganize! ([www.oliver-frietsch.de](http://www.oliver-frietsch.de)). Possibly, the "Save" button in ReOrganize mussed be clicked 2 - 3 times, until the changes are accepted (in between, a track must be moved back and forth).
- To make sure that your music files will be found, please change into the respective folder/sub-folder.

### 15. Can the player operate with a rechargeable battery as well?

- Yes. Please consider the shorter operation time of a rechargeable battery compared with a normal battery. For charging the rechargeable battery you need a customary charging device.
- We recommend to rather use NiMH than NiCd batteries, since they don't have to be emptied totally before a new recharging process.



## FREQUENTLY ASKED QUESTIONS - continued

### 16. My player turns on by itself after upgrading the firmware.

- Please take out the battery for about 10 seconds. By doing so the problem should be solved.

### 17. Why does my player display too little memory in its menu?

- This is a rounding error caused by the rounding predications '1024 Bytes come up to 1 KB' and '1024 KB come up to 1 MB'.  
When you connect the player to the computer and look for the properties of the drive you will find the correct value of the player's memory capacity.
- Furthermore, the player needs a little part of memory for the firmware.

### 18. Why can't I directly copy and paste music tracks from an audio CD to the player?

- The audio CD content displayed in the explorer does not show music data but index data, which can not be directly copied to an MP3/WMA player.  
The audio CD data must be converted into MP3 file format first by using an appropriate tool like CDex, for example. After converting, you can copy your music files to the player.

### 19. Does my MP3 player work under Linux as well?

- Since Kernel Ver. 2.6, the HotPlug&Play function for USB devices which is standard for operating systems like Windows and Mac OS, is supported by Linux as well.  
So, there's no problem to operate the Redfish player comfortably by using Linux.
- If you use older Linux kernels please refer to <http://www.linux-usb.org>.
- Sorry, but due to the big number of current Linux versions we cannot offer you technical Linux support.

### 20. Can I work with folders when I use my player?

- Yes, you can.

### 21. Why does my player display "Incorrect Format, reformat the player", when I switch it on?

- The player has been formatted with the wrong system, for example NTFS, Mac OS or Unix. To enable it again for playing audio tracks, please format the player in DOS format (Mac) respectively FAT format (Windows).

### 22. Why does my PC not detect the player with Windows XP?

- Redfish USB devices support Hot Plug & Play. That means you don't need additional files when using Windows XP, because the system accesses to Windows internal drivers.  
In case this automatical detection does not work, please contact support of your PC vendor, or reinstall your operating system.

### 23. Why do I have problems with WMAs?

- Music files downloaded from sites like Musicload, MSN Music and other download services are DRM-protected and therefore can not be played with the REDFISH player.
- Even for audio CDs ripped with the MediaPlayer the property rights might have been spoken for. Therefore, also these tracks can not be played.

### 24. Why are the ends of the headphones of different lengths?

- The longer end is always behind the head to avoid tension of the cable.

### 25. Can the player operate as a USB-device even without a battery?

- Yes, when the player is connected to the PC, no battery is needed.

## FREQUENTLY ASKED QUESTIONS - *continued*

---

26. Why does the equalizer setting not stay the same after turning the player on and off?

- This problem can be solved, by just downloading the version of our firmware 3.198. Furthermore with this version the resume function works even after the title 127. You can download the firmware from our website and install it as described.

27. Why does the player not remember the volume setting after turning off and on?

- The player does remember the volume setting but to avoid any possible damage to the ear the volume will be turned down by 60% automatically from the upper level.

28. Why is my (rechargeable) battery sooner low than shown in the manual?

- A rechargeable battery generally has a power of 2/3 up to 3/4 of the power of a battery. If you use a lower priced (rechargeable) battery the capacity differs, mostly. Thus we recommend to use batteries of a good brand (such as Varta). Furthermore, referring to the quality and the type of the data the player needs more power and a higher capacity is necessary. A WMA-file, for example, needs more power than a MP3-track with the same quality.

## PRODUCT SPECIFICATIONS

---

### Size (L x W x H)

- about 88 x 33 x 20 mm

### Weight

- about 40 g (incl. battery)

### Memory

- Internal Memory: 512 MB
- 10 MB are required for firmware and system-management
- No Memory Expansion Slot

### Interface

- USB 2.0 Full Speed

### Power

- 1 AAA-Battery
- Battery life: continuous playing time about 8 hours

### Equalizer

- Normal, X-Bass, Rock, Classic, Pop, Jazz

### Display

- 128 x 32 Dot-Matrix LCD
- English and European ID3 Tag display

### Buttons & Switches

- button Power On / Play / Pause
- button Power Off / Stop
- button Skip Next (track/directory)
- button Skip Previous (track/directory)
- button Menu
- button Volume +
- button Volume -
- switch Hold

### Processor

- 75 MIPS DSP

### Audio-Playback (decoding)

- MP3 - MPEG Audio Layer 3
- WMA - Windows Media Audio

### Voice-Recording

- IMA-ADPCM encoding
- about 32 hours recording with 512 MB memory (using default setting)

### Signal-to-Noise Ratio

- > 90 dB

### Frequency Response

- 20 Hz ~ 20 KHz

### Output

- 5 mW (each output)

### Total Harmonic Distortion Output

- 0.01% ~ 0.1%

### Ports

- USB port type A
- Phone out: 3.5 mm pin earphone socket

### Firmware

- Flash-based, can be upgraded by user
- Updates at [www.redfish-products.de](http://www.redfish-products.de)